

SEM Specimen Stubs

Short Pin Type

Aluminium

1/2" Ø (12.5mm) with 3.2mm Ø pin with groove for **Cambridge/LEO, Philips, Etec** etc instruments.

S081 1/2" Pin type stub (with groove) pack of 100
S081/1 1/2" Pin type stub (with groove) pack of 1000

S182 1/2" Pin type stub (without groove) pack of 100

Brass

S178 1/2" Pin type stub (with groove) pack of 10

Copper

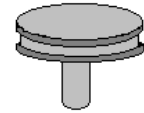
S179 1/2" Pin type stub (with groove) pack of 10

1" Ø (25.4mm) Aluminium Short Pin type stub with 3.2mm Ø pin for **Cambridge/LEO** and **Philips** instruments.

S087 1" Pin type stub pack of 50

32mm Ø Aluminium Short Pin type stub with 3.2mm Ø pin for **Camscan**

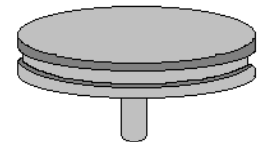
S181 32mm Ø pin type stub pack of 50



S081/S178/S179



S182

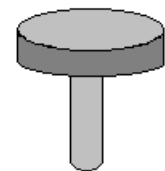


S087

Long Pin Type

Aluminium 1/2" Ø (12.5mm) with 3.2mm pin for **Amray**

S180 1/2" Amray pin stub pack of 50

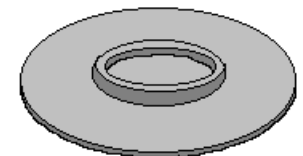


S180

Re-entry Type

32mm (1 1/4") Ø re-entry (dish) type stub for **Cambridge/LEO**

S091 32mm (1 1/4") Ø Aluminium re-entry type stub pack of 50

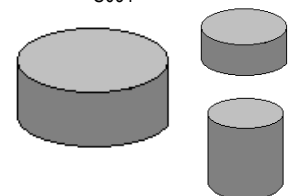


S091

Cylinder Type

Plain cylindrical aluminium stubs for **JEOL** instruments

S183 10mm Ø x 3.5mm high	pck of 50	S084 15mm Ø x 5mm high	pck of 50
S082 10mm Ø x 5mm high	pck of 50	S085 15mm Ø x 10mm high	pck of 50
S083 10mm Ø x 10mm high	pck of 50	S086 15mm Ø x 15mm high	pck of 50
S184 10mm Ø x 12.5mm high	pck of 50	S089 32mm Ø x 5mm high	pck of 50
S185 12.5mm Ø x 5mm high	pck of 50	S090 32mm Ø x 10mm high	pck of 50
S186 12.5mm Ø x 10mm high	pck of 50	S188 32mm Ø x 20mm high	pck of 50
S187 12.5mm Ø x 15mm high	pck of 50	S189 50mm Ø x 10mm high	pck of 50



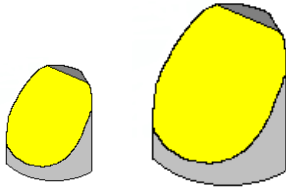
Re-entry Type Stub Adapter

A simple, effective adapter to convert 12.5mm (1/2") pin stubs to allow 32mm (1.5") Ø re-entry dish type stubs to be used on 1/8" stage. The ball catch gives a trouble free, quick solution to a difficult problem.

S261 SEM stub adapter - re-entry stub



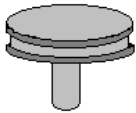
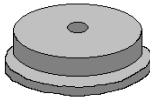
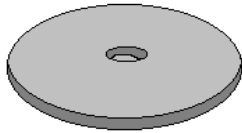
Chamfered Type



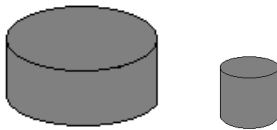
Aluminium stubs with a chamfered angle of 45° suitable for JEOL or ISI instruments where fitting stages are not available.

S127	Angled stub 10mm Ø	pack of 10
S190	Angled stub 12.5mm Ø	pack of 10
S126	Angled stub 15mm Ø	pack of 10

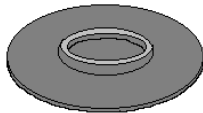
Threaded Type



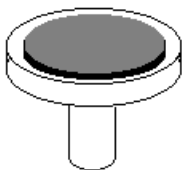
Types S100/101



Types S102/103/104/105



S106/107



Aluminium stubs threaded with M4 female thread in base for Hitachi instruments.

S128	Threaded stub 15mm Ø x 6mm high	pack of 50
S191	Threaded stub 25mm Ø x 6mm high	pack of 50
S192	Threaded stub 32mm Ø x 2mm high	pack of 50
S193	Threaded stub 32mm Ø x 10mm high	pack of 50

Carbon Stubs

Where the background radiation from the specimen stub is troublesome, a specimen stub manufactured from spectroscopic carbon may be used. Stubs for Cambridge/LEO, JEOL and ISI microscopes are available. They can have a *standard* finish or an *ultra smooth* finish for small particles or fibres.

S100	Carbon stub for Cambridge/LEO standard finish	each
S101	Carbon stub for Cambridge/LEO <i>ultra smooth</i> finish	each
S102	Carbon stub for JEOL (10 Ø x 10mm H) standard	each
S103	Carbon stub for JEOL (10 Ø x 10mm H) <i>ultra smooth</i>	each
S104	Carbon stub for ISI (15mm Ø x 10mm H) standard	each
S105	Carbon stub for ISI (15mm Ø x 10mm H) <i>ultra smooth</i>	each
S106	Carbon stub for Cambridge microanalysis stage std	each
S107	Carbon stub for Cambridge m/analysis stage <i>u/smooth</i>	each

Carbon Disc on Stub

This is an economical solution to the need for a light element surface for mounting specimens that are to be used for microanalysis. The carbon disc is 3mm thick and is glued to a standard ½" (12.5mm) stub.

Supplied in batches of 8 stubs in a stub storage box.

S111 Box of 8 carbon covered ½" (12.5mm) stubs

SEM Sample Stub Storage Box



This box accommodates up to 9 mounting stubs of either 1" (25mm) in diameter or a 1/8" (3.2mm) diameter pin.

It is constructed from a soft silicone base in a hinged plastic box with a clear lid. The base has 9 cavities, each 1" (25mm) in diameter and ¼" (6mm) deep.

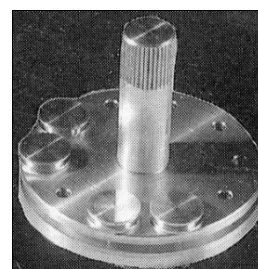
Overall measurements: 4¾"(L) x 3⁵/₈"(W) x ¼"(H) (12cm x 9.5cm x 3cm)

B576 SEM stub storage box for 1" (25mm) Ø cylinder or 3.2mm Ø pin stub

Preparation Stand for SEM Specimens

A cylindrical aluminium block for holding up to 10 specimen mounts for attachment of, or manipulation of samples. A rubber 'O' ring retains the mounts.

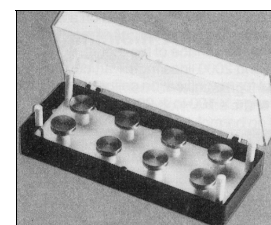
- | | | |
|-------------|---------------------------------|------|
| M168 | Mounting block - pin stubs | each |
| M169 | Mounting block - 10mm cylinders | each |



Storage Boxes for SEM

TAAB offers a range of storage boxes that will accept specimen mounts in common use. The units consist of a transparent plastic box containing a white plastic insert. The specimen mounts are a push fit into the appropriate holes and do not shake loose during transportation. There is sufficient height above the specimen (approx. 12mm) to permit the storage of very thick mounted specimens. An identification label is enclosed to record specimens.

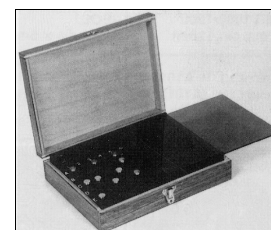
- | | | |
|-------------|---|------|
| B098 | Storage box for 8 x 1/2" pin type mounts | each |
| B157 | Storage box for 8 x 10mm Ø mounts | each |
| B099 | Storage box for 8 x 15mm Ø mounts | each |
| B158 | Storage box for 3 x 32mm dish type mounts | each |



B098

Wooden Box

- | | | |
|-------------|---|------|
| B097 | Storage box for 54 x 1/2" pin type mounts | each |
|-------------|---|------|



B097

SEM-STOR Economical Storage

Sem-Stor is the answer to economical storage of SEM specimens. It is made from cardboard and has a fold-up insert that takes 8 specimen mounts of the 1/2" pin type. The front lip of the box is cut away for convenient observation and handling of stubs. Shipped flat, makes up into a 7 x 3.8 x 3.5cm high box.

- | | | |
|---------------|--|---------|
| B135 | Sem-Stor cardboard storage box for 1/2" mounts | each |
| B135/1 | Sem-Stor cardboard storage box for 1/2" mounts | per 100 |

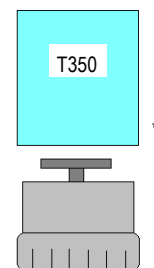


B135

Single Stub Storage Tube

For storage or transportation. The SEM stub pin is a tight push fit inside the cap that is then placed in the clear acrylic tube. A secure and effective method for post or pocket.

- | | | |
|---------------|--------------------------|------------|
| T350 | Single stub storage tube | pack of 5 |
| T350/1 | Single stub storage tube | pack of 25 |



Tweezers for Stubs

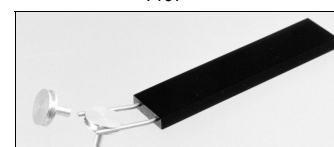
Tweezers specially designed for handling 1/2" specimen stubs commonly used in SEM.

- | | | |
|-------------|------------------------|------|
| T137 | Tweezer for 1/2" stubs | each |
|-------------|------------------------|------|



T137

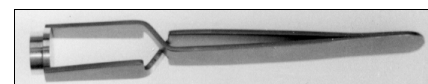
- | | |
|-------------|--|
| T330 | SEM stub handling tool - A simple robust tool to fit 12.5mm pin stubs as an alternative to T137 suitably angled to allow convenient handling of the stubs in confined areas. The beryllium copper prongs allow a firm grip to be repeatedly achieved without loss of spring tension. |
|-------------|--|



T330

Tweezer for Hitachi Stubs

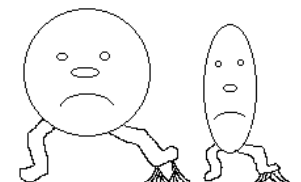
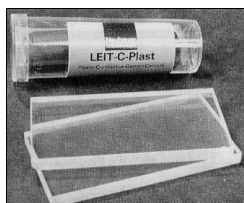
- | | | |
|-------------|---|------|
| T329 | Special tweezer for handling 15mm Ø Hitachi stubs | each |
|-------------|---|------|



T329

SEM Specimen/Stub Adhesives

A listing of many different adhesive methods for attaching specimens to SEM mounts.



Colloidal Graphite

A suspension of pure, fine colloidal graphite in water or in isopropanol based solution. To form a conducting dry film of graphite on a variety of materials.

C107	Colloidal graphite - aqueous base	500g
C126	Colloidal graphite - isopropanol base	500g

Silver Paint

An air drying paint containing silver flakes. Dries to form a conducting film that is ideal for sample mounting.

S269	Silver paint	10g
S270	Silver paint	50g

Silver Paint Thinners

A thinner to reduce the thickness of our silver paint S066 to make thin conductive tracks on the specimen for microprobe work.

S271/1	Silver Paint Thinners	25ml
S271	Silver paint thinners	100ml

Silver Epoxy Adhesive

A two part silver filled epoxy adhesive providing a conducting joint and bond. *Silver content 70%*. Information sheet provided with each pack.

S055	Silver epoxy adhesive	pack of 10g
-------------	-----------------------	-------------

Conducting Carbon Cement (Leit-C)

A suspension of very fine carbon particles in a volatile carrier. Suitable for forming a conducting film bond between specimen or carbon disc to stub.

C198	Carbon cement (Leit-C)	30g
C198/1	Thinners for Leit-C	30ml

Leit-C Plast

A plasticine like material with low outgassing properties suitable for use in the high vacuum of the SEM. Leit-C Plast is a conductive material requiring no additional coating and is suitable for many applications in specimen preparation.

C199	Leit-C-Plast	15g
-------------	--------------	-----

Tempfix

A thermoplastic adhesive that when applied to a heated stub at approximately +40°C yields a sticky surface suitable for holding specimens. It dries quickly to a very smooth surface and remains stable under the SEM.

T328	Tempfix	set
-------------	---------	-----

Microstik

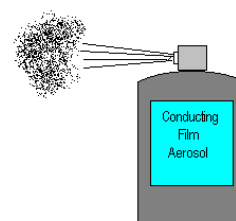
A clear adhesive for mounting small particles. Provides an ultrathin base when applied to the SEM specimen mount. Dries quickly and is non-conductive

M167	Microstik solution	14ml
-------------	--------------------	------

Conducting Film Aerosol

A rapid method of spraying a conductive film onto SEM specimens such as pieces of biological tissue. Effects are not permanent so it is ideal for rapid examination in the SEM.

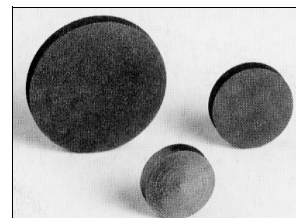
C212 Conducting film aerosol 397ml can



Carbon Discs

A range of discs 3mm thick with diameters of 12.5mm, 15mm or 25mm for mounting specimens in the SEM.

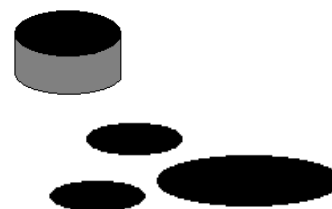
C304/10 Carbon discs 12.5mm Ø pack of 10
C305/10 Carbon discs 15mm Ø pack of 10
C306/10 Carbon discs 25mm Ø pack of 10



Conductive Carbon Adhesive Discs

For SEM stubs. An improvement on double sided tape. These new doubly adhesive carbon based discs ensure good electrical connection whilst retaining the benefits of a quick mounting method.

C263/N 9mm Ø pack of 100
C249/N 12mm Ø pack of 100
C252/N 25mm Ø pack of 51



Sulphur-Free Conductive Carbon Discs

Adhesive discs with low background for microanalysis

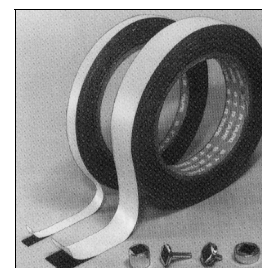
C272 Sulphur-free conductive carbon tabs 12mm Ø pack of 120



Double Sided Sticky Carbon Tape

Highly conductive tape for SEM and EDS applications. The double adhesive and conductive design permits quick mounting of samples without using liquid or colloidal adhesives. The tape is relatively solid and non-porous and does not absorb small samples. Thickness is 0.16mm.

C261 Carbon tape 8mm x 20m long each
C277 Carbon tape 12mm x 20m long each
C278 Carbon tape 50mm x 20m long each



Conductive Carbon Adhesive Sheet

For SEM or EDS we have available double sided carbon sheet for eliminating background X-rays. When cut to size it is easy to place on SEM stubs and is contaminant free.

C206 Carbon conductive adhesive sheet 5 x 12cm pack of 10



Sticky Tabs

Sticky tabs may be affixed to most types of stubs. Once affixed to the top of a stub simply remove the peel-off tab to leave a 1/2" (12.7mm) Ø layer of adhesive to which small specimens can be fixed, or impressions such as fingerprints can be made in the adhesive for examination. Non conducting and the strong silicone adhesive does not outgas in the vacuum. The adhesive can be removed with acetone.

T199 Sticky tabs pack of 100

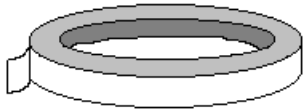




Copper Tape

Copper strip with pressure sensitive adhesive backing. Ideal for static charging problems etc.

T188 Copper tape 12mm x 16m per roll



Aluminium Tape

Two sizes of aluminium strip with pressure sensitive adhesive backing. Ideal for conductive connections etc.

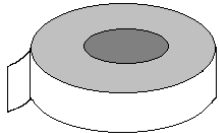
T189 Al tape 12mm x 55m x 0.09mm per roll **T189/1** As T189 but 0.13mm thick
T190 Al tape 25mm x 55m x 0.09mm per roll **T190/1** As T190 but 0.13mm thick



Magic Tape

This 3M tape is transparent when affixed to objects and makes amending and updating documents easy. It is ideal for making small labels being easy to type or write on and is invisible on photocopies.

T191 Magic tape 12mm x 66m per roll
T523 Magic tape 25mm x 66m per roll



Double Sided Tape

A thin double sided sticky tape in two widths suitable for mounting specimens and for general SEM work.

T063 Double sided tape 12mm x 66m per roll
T064 Double sided tape 38mm x 66m per roll

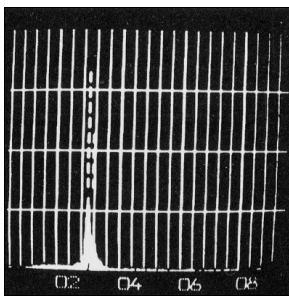


Silver Conducting Adhesive Sheet

Highly electrically conductive sheet 5 x 12 x 0.16cm thick suitable for cutting and sizing to samples for SEM.

- Little outgassing under vacuum
- Doesn't absorb or penetrate specimens

S331 Silver conductive sheet pack of 5

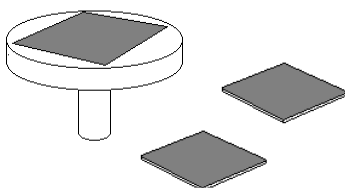


EDS spectrum of silver sheet S331

Silicon Chip Specimen Supports

Si-chips are opaque, of low electrical resistance and have surface properties equal to glass. They are chemically inert and make good substrates for growing or mounting cells or ferritin particles. They are useful for determining resolution and contrast capabilities of the "in-the-lens" SEMs equipped with high brightness electron emitters. Si-chips are precleaned before packing

S332 4" (10cm) silicon wafer diced into approx. 270 chips 5 x 5mm



Scintillator Discs

Plano P47 Scintillator Discs

These discs are highly recommended for routine use, being coated with a very uniform layer of carefully selected P47 phosphor. They have a high signal output and a good working life. They should not normally be coated with aluminium unless cathodoluminescence studies are envisaged. An aluminium coating reduces the efficiency by some 20%. Discs are available for all principal types of microscopes. Special sizes are available on request.



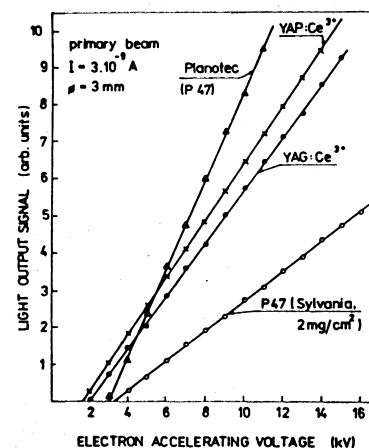
YAG Single Crystal Scintillator Discs

Yttrium Aluminium Garnet has a very fast response time of 50-60 ns and unlike plastic or most phosphor scintillators they do not degrade when bombarded by electrons or ions. They are very suitable for high current operations and have a very long lifetime. Light emission peaks about 560nm, response time below 5kV is better with YAG than for P47. The crystal should be coated with 50nm of aluminium before use. If the layer becomes damaged it can be removed with sodium hydroxide without damaging the surface of the crystal. The crystal is mounted with the matt surface in contact with the light pipe as this has been shown to increase efficiency.

The discs are all 1mm thick unless otherwise specified.

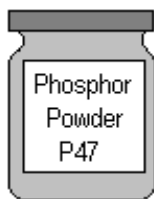
YAP Single Crystal Scintillator Discs

Yttrium Aluminium Perovskite crystals are more efficient in light output than YAG (see graph). Also the emission spectrum peaks at about 378nm which corresponds closely to the maximum sensitivity of the S11 photo multiplier that is in general use in most electron microscopes. There is therefore a significant improvement in signal by using the YAP crystal rather than the YAG. The decay time of YAP crystals is 40ns compared with YAG of 80ns, so overall performance of YAP is superior to YAG.



Usage Chart

Diameter	Instrument	P47	YAG	YAP
7.7mm	ISI Mini SEM	S214	S214/G	S214/P
8.8 x 2mm	JEOL, JSM, T20, T200, 840	S215	S215/G	S215/P
9.0 x 3mm	ETEC	S216	S216/G	S216/P
10.0mm	Cambridge/LEO (except S600), AMR1200	S217	S217/G	S217/P
12.0mm	Cambridge S600	S218	S218/G	S218/P
12.0 x 0.17mm	Zeiss SEM	S219	S219/G	S219/p
12.4 x 3.2mm	Cameca	S220	S220/G	S220/P
13.7mm	ISI, JEOL	S221	S221/G	S221/P
16.4 x 0.17mm	Zeiss, Novascan, Semco/Zeiss	S222	S222/G	S222/P
18.0mm	Camscan/Balscan	S223	S223/G	S223/P
19.8mm	Hitachi with metal ring	S224	S224/G	S224/P
20.0mm	JEOL except JSM T20, T200, 840, AMR1000, 1400, 1600, 1700	S225	S225/G	S225/P
20.0 x 2mm	Philips	S226	S226/G	S226/P



Phosphor Powder

For those wishing to prepare their own scintillator discs, TAAB offers a P47 phosphor powder to a specification recommended for scintillator coating.

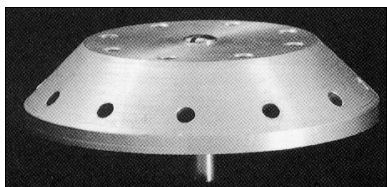
P065 Phosphor powder P47 25g

SEM Specimen Holders and Mounts

A wide range of multi stub and specimen mounting clamps for SEMs is available to fit most scanning electron microscopes that extend the range and versatility of the instrument. They allow either a number of stubs to be loaded into the SEM at the same time as in the case of the multi stub holder or alternatively samples of irregular shape can be examined by use of one of the specimen clamping devices. The clamping devices can also be used where it is difficult or impossible to attach a sample to a normal stub.

When ordering please give full details of the SEM including accessories.

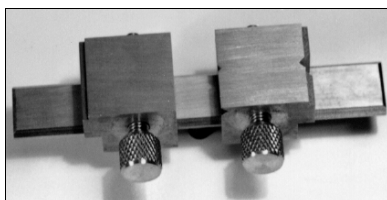
Multi Stub Holder



This holder will accommodate 20 pin type stubs 12 at an angle of 45°, 8 horizontal. The top part of the holder has been removed allowing samples to be examined at zero tilt. The holder may need factory modification to match the microscope to which it is to be fitted. Please state make and model of SEM.

S163 Multi stub holder 65mm Ø x 15mm H for SEM specimen stubs

Bar Clamp

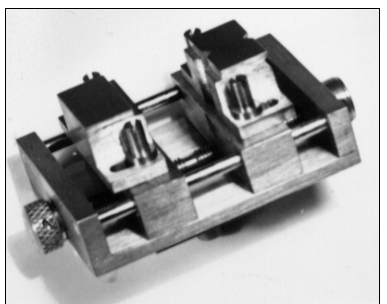


This bar type specimen clamp has a standard pin stub type mount on the reverse side and will accommodate specimens up to 72mm wide. The reversible jaws operate independently allowing the area of interest to be positioned accurately within the travel limits of the microscope stage. When ordering please specify model of microscope, stage type in use, and any other accessories such as X-ray or back scattered detectors.

Overall length 102mm *Width including jaw mechanism* 42mm
Width of bar 16mm *Height (excl base mount)* 19mm

S160 Bar clamp

Thumbwheel Clamp



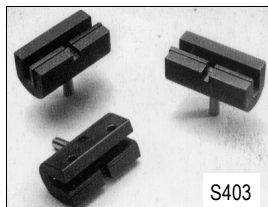
The thumbwheel clamp has single operation symmetrical vice motion with reversible clamping bars to give different sized indentations to clamp irregular shaped specimens. Two models are available for specimens up to 34mm or up to 51mm

S161 Thumbwheel clamp 34mm
Base length 62mm (including thumbwheel mechanism 72mm)
Width 42mm, *Height (excl base mount)* 27mm, *Max jaw opening* 34mm

S162 Thumbwheel clamp 51mm
Base length 82mm (including thumbwheel mechanism 96mm)
Width 58mm, *Height (excl base mount)* 30mm, *Max jaw opening* 51mm



S402



S403

Slotted Specimen Stubs

1) A 12.5mm slotted aluminium pin stub with two Allen screws allowing the specimen to be securely clamped for examination. Allen key supplied.

S402 Slotted specimen stub with two screws

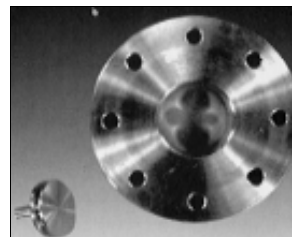
2) A gripping pin stub with slot and single screw to allow specimens to be mounted edge-on for examination (designed at the University of Leicester).

S403 Gripping stub

Multi Stub Holder - Flat

A carousel style multiple pin stub holder that will hold eight 12.7mm pin stubs.

S396 Multi stub holder, flat (please state make and model of SEM)



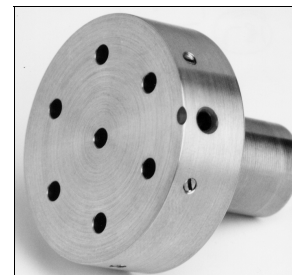
Multi Stub Holder - Flat Top

This flat top holder permits seven (7) 12.5mm pin stubs to be loaded into the SEM at one time.

Overall diameter 39mm *Height (excl base mount)* 16mm

S296 Multi stub holder - flat top for Hitachi

S296/A Multi stub holder - flat top for other instruments (please specify)



Multi Stub Holder - Conical

Conical shaped pin stub holder. Will fit Hitachi SEM stages without affecting standard tilt and rotation. Accepts six (6) stubs at an angle of 45°.

Overall diameter 39mm *Height (excl base mount)* 16mm

S164 Multi stub holder - conical for Hitachi

S164/A Multi stub holder - conical for other makes (please specify)



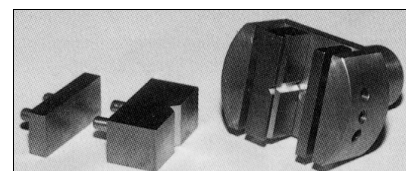
Specimen Clamp

This clamp is supplied with five interchangeable jaws for accommodating samples of different sizes. Maximum width is 20mm.

Overall length 39mm, *Overall width* 26mm, *Height (excl base mount)* 16mm

S165 Specimen clamp for Hitachi

S165/A Specimen clamp for other makes (please specify)



Stub Adapters

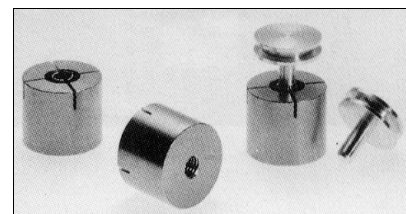
These adapters allow JEOL, ISI/ABT and Hitachi users to accommodate the standard pin stubs of the European and American manufacturers. The conversion cylinder contains a clip to hold the pin stub.

S367 Converter for JEOL, 10mm Ø cylinder

S367/1 Converter for JEOL, 12.5mm Ø cylinder

S367/2 Converter for ISI/ABT, 15mm Ø cylinder

S367/3 Converter for Hitachi, 15mm Ø cylinder with M4 internal thread

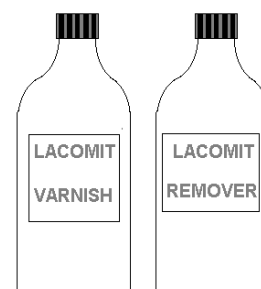


Lacomit Varnish and Remover

For those who wish to prepare thinned TEM specimens by one of the 'window' techniques, Lacomit is a peelable varnish for blanking off the portions of the specimen that are not to be polished. A solvent remover is also available. Both reagents are flammable and special transportation and limitations apply for shipping overseas.

L063 Lacomit varnish 500ml

L064 Lacomit remover 500ml





M-Bond™ 610 Adhesive

A non-conductive two-component, solvent-thinned, epoxy-phenolic adhesive for high performance applications. Chemically resistant providing a thin layer of glue with good ion milling properties. Has low viscosity with minimum creep, hysteresis and linearity problems. Solids content is 22%. It is an excellent adhesive for mounting samples for TEM dimpling and bonding of samples to TEM grids for imaging or FIB. Operating temperature range short term is -269° to +370°C; long term, -269° to +260°C.

This may be the widest temperature range general-purpose adhesive that is available.

Kit contains: Resin (4 bottles 14g each) Curing Agent (4 bottles 11g each), 4 brush caps for dispensing mixed adhesives, 4 disposable mixing funnels and instructions.

AXXX



Hitachi Three Stub Holder

An aluminium holder with M4 thread that will accommodate three 15mm Hitachi stubs.

S397 Hitachi holder for three stubs



Hitachi Holder for Six Pin Stubs

An aluminium holder with M4 thread to accommodate six pin stubs.

S398 Hitachi holder for 6 pin stubs



Freeze Drying Holder for Pin Stubs

A holder for five 12.7mm pin stubs for drying, carbon or metal coating.

Dimensions: 37.5mm Ø x 12.5mm high

S399 Freeze drying, metal coating holder



SEM Stub for TEM Grids

In some applications (e.g. some SEM/EDX) results are improved if particulate samples are mounted on thin films deposited onto TEM grids. This pin-type aluminium stub allows four grids to be held securely for SEM work. There is a hole under each grid to reduce the backscatter component in electron collection and prevent extraneous X-ray collection.

S400 SEM stub aluminium (pin-type) for TEM grids

S401 SEM stub copper (pin-type) for TEM grids for cryo applications

SEM Finder Grid

This finder grid incorporates several easy location features for the identification of areas of special interest. Grid available in copper, nickel or gold.

- The annular ring identifies North, East, South and West
- The four quadrant markers are tapered towards the centre
- 100 radial sectors are easily identified by reference to decimal numbers in the annular rim and alphabet letters in the four quadrants
- A matt surface on one side is for correct positioning - matt side up

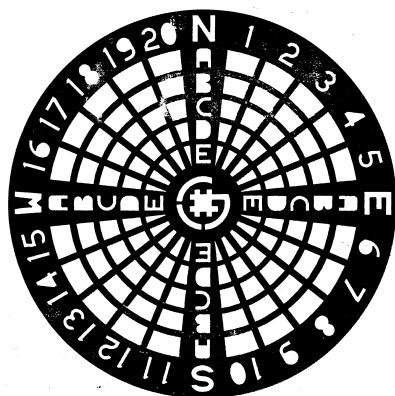
Overall diameter 10mm

Thickness 50µm

G198/C SEM finder grid *copper* (10)

G198/N SEM finder grid *nickel* (10)

G198/G SEM finder grid *gold* (5)



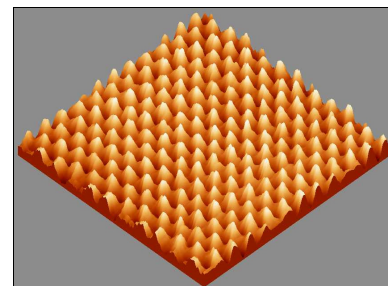
AFM/STM/SPM Accessories

Highly Orientated Pyrolytic Graphite

H.O.P.G is widely used as a substrate for AFM/STM specimens. It can also be used as a calibration specimen.

G260 H.O.P.G.

piece approx. 10 x 10 x 2mm

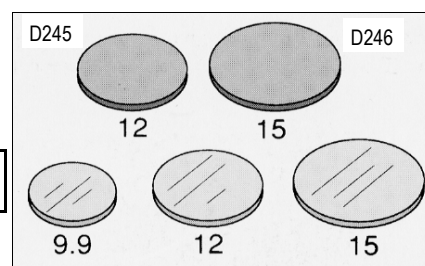


SPM Metal Specimen Discs

These high quality discs for SPM are manufactured with smooth edges and consistently flat surfaces.

D245 SPM specimen discs, 12mm Ø, pack of 50

D246 SPM specimen discs, 15mm Ø, pack of 50



Mica Mounting Discs and Glass Coverslips

An alternative to metal discs for certain applications.

M406 Mica discs 9.9mm Ø, pack of 10

M407 Mica discs 14mm Ø, pack of 10

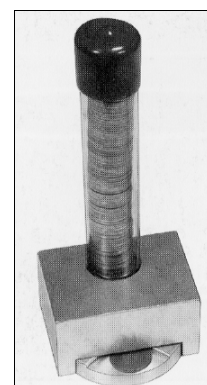
C302 Round glass coverslips, 12mm Ø, box of 100

C303 Round glass coverslips, 15mm Ø, box of 100

SPM Dispenser for Discs

An easy and clean way to store and dispense SPM discs. The plastic package containing the discs is inserted into the dispenser and a single disc can be dispensed with a simple turn of the cylinder. This can then be picked up using the disc gripper. The dispenser is suitable for 12 or 15mm Ø discs.

D247 SPM disc dispenser

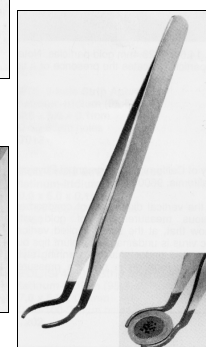
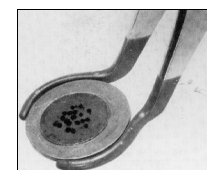


Disc Gripper

A gripper specially designed to pick up discs from a flat surface without damage due to the rubber coated tips.

G199/12 Gripper for 12mm Ø discs

G199/15 Gripper for 15mm Ø discs



Disc Carrier/Storage

A practical and dust-free way to store 12mm and 15mm Ø discs. Discs are placed face down in a stepped cavity that prevents damage to the specimen. The sliding cover secures the disc in position.

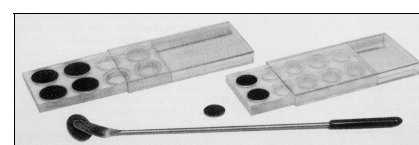
D248 Disc carrier to take ten (10) 12mm Ø discs

D249 Disc carrier to take eight (8) 15mm Ø discs

Magnetic Pick-up Tool

A convenient magnetic tool for for picking up and manoeuvring discs without damage to the specimen.

T543 Magnetic pick-up tool



Disc carrier

Magnetic Pick-up Tool

For up-to-date information visit our web page

www.taab.co.uk

This will enable you to download all or part of our catalogue as PDFs.

We can also source products not listed as standard in our catalogue so give us a call to find that elusive product on:

++44(0)118 981 7775

or

e-mail **sales@taab.co.uk**

TAAB

Laboratory & Microscopy

