

SEM Specimen Stubs

Short Pin Type

Aluminium

1/2" Ø (12.5mm) with 3.2mm Ø pin with groove for **Cambridge/LEO/Zeiss, Philips, Etec** etc instruments.

S081	1/2" Pin type stub (with groove)	pack of 100
S081/N	As above with alpha/numeric numbering	min pack of 500
S081/1	1/2" Pin type stub (with groove)	pack of 1000

S182	1/2" Pin type stub (without groove)	pack of 100
-------------	-------------------------------------	-------------

Brass

S178	1/2" Pin type stub (with groove)	pack of 10
-------------	----------------------------------	------------

Copper

S179	1/2" Pin type stub (with groove)	pack of 10
-------------	----------------------------------	------------

1" Ø (25.4mm) Aluminium Short Pin type stub with 3.2mm Ø pin for **Cambridge/LEO/Zeiss** and **Philips** instruments.

S087	1" Pin type stub	pack of 50
-------------	------------------	------------

32mm Ø Aluminium Short Pin type stub with 3.2mm Ø pin for **Camscan**

S181	32mm Ø pin type stub	pack of 50
-------------	----------------------	------------

Long Pin Type

Aluminium 1/2" Ø (12.5mm) with 3.2mm pin for **Amray**

S180	1/2" Amray pin stub	pack of 50
-------------	---------------------	------------

Re-entry Type

32mm (1 1/4") Ø re-entry (dish) type stub for **Cambridge/**

LEO/Zeiss

S091	32mm (1 1/4") Ø Aluminium re-entry type stub	pack of 50
-------------	--	------------

Cylinder Type

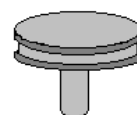
Plain cylindrical aluminium stubs for **JEOL** instruments

S183	10mm Ø x 3.5mm high	pck of 50	S084	15mm Ø x 5mm high	pck of 50
S082	10mm Ø x 5mm high	pck of 50	S085	15mm Ø x 10mm high	pck of 50
S083	10mm Ø x 10mm high	pck of 50	S086	15mm Ø x 15mm high	pck of 50
S184	10mm Ø x 12.5mm high	pck of 50	S089	32mm Ø x 5mm high	pck of 50
S185	12.5mm Ø x 5mm high	pck of 50	S090	32mm Ø x 10mm high	pck of 50
S186	12.5mm Ø x 10mm high	pck of 50	S188	32mm Ø x 20mm high	pck of 50

Re-entry Type Stub Adapter

A simple, effective adapter to convert 12.5mm (1/2") pin stubs to allow 32mm (1.5") Ø re-entry dish type stubs to be used on 1/8" stage. The ball catch gives a trouble free, quick solution to a difficult problem.

S261	SEM stub adapter - re-entry stub
-------------	----------------------------------

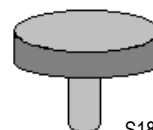


S081/S178/S179

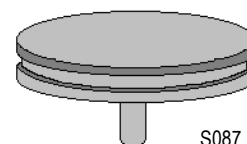


S081/N

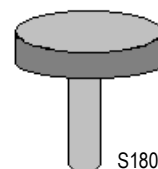
Please state sequence when ordering



S178



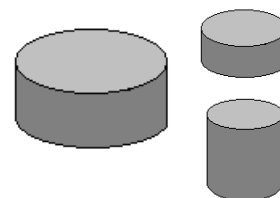
S087



S180



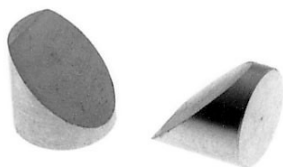
S091



S261

10 SEM, TEM, STM Supplies

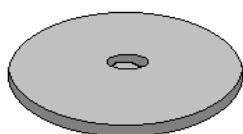
Chamfered Type



Aluminium stubs with a chamfered angle of 45° suitable for JEOL or ISI instruments where tilting stages are not available.

S127	Angled stub 10mm Ø	pack of 10
S190	Angled stub 12.5mm Ø	pack of 10
S126	Angled stub 15mm Ø	pack of 10

Threaded Type

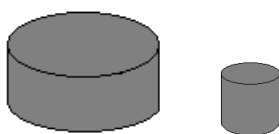


Aluminium stubs threaded with M4 female thread in base for Hitachi instruments.

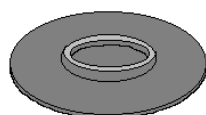
S128	Threaded stub 15mm Ø x 6mm high	pack of 50
S191	Threaded stub 25mm Ø x 6mm high	pack of 50
S192	Threaded stub 32mm Ø x 2mm high	pack of 50
S193	Threaded stub 32mm Ø x 10mm high	pack of 50

Carbon Stubs

Types S100/101



Types S102/103/104/105



S106/107

Where the background radiation from the specimen stub is troublesome, a specimen stub manufactured from spectroscopic carbon may be used. Stubs for Cambridge/LEO, JEOL and ISI microscopes are available. They can have a *standard* finish or an *ultra smooth* finish for small particles or fibres.

S100	Carbon stub for Cambridge/LEO standard finish	each
S101	Carbon stub for Cambridge/LEO <i>ultra smooth</i> finish	each
S102	Carbon stub for JEOL (10 Ø x 10mm H) standard	each
S103	Carbon stub for JEOL (10 Ø x 10mm H) <i>ultra smooth</i>	each
S104	Carbon stub for ISI (15mm Ø x 10mm H) standard	each
S105	Carbon stub for ISI (15mm Ø x 10mm H) <i>ultra smooth</i>	each
S106	Carbon stub for Cambridge microanalysis stage std	each
S107	Carbon stub for Cambridge m/analysis stage <i>u/smooth</i>	each

Carbon Disc on Stub

This is an economical solution to the need for a light element surface for mounting specimens that are to be used for microanalysis. The carbon disc is 3mm thick and is glued to a standard 1/2" (12.5mm) stub.

Supplied in batches of 8 stubs in a stub storage box.

S111 Box of 8 carbon covered 1/2" (12.5mm) stubs

SEM Sample Stub Storage Box



This box accommodates up to **9 mounting stubs** of either 1" (25mm) in diameter or a stub with 1/8" (3.2mm) diameter pin.

It is constructed from a soft silicone base in a hinged plastic box with a clear lid. The base has **9 cavities**, each 1" (25mm) in diameter and 1/4" (6mm) deep.

Overall measurements: 4 3/4"(L) x 3 5/8"(W) x 1/4"(H) (12cm x 9.5cm x 3cm)

B576 SEM stub storage box for 1" (25mm) Ø cylinder or stub with 3.2mm Ø pin