

SEM Specimen Stubs

Short Pin Type

Aluminium

1/2" Ø (12.7mm) with 3.2mm Ø x 8mm long pin, with groove for **Cambridge/LEO, Philips, Etec** etc instruments.

S081	1/2" Pin type stub (with groove)	pack of 100
S081/N	As above with alpha/numeric numbering	min pack of 100
S081/1	1/2" Pin type stub (with groove)	pack of 1000
S081/HP	1/2" Pin type stub (with groove) high purity Al for analysis apps	pack of 100
S081/T	1/2" Pin type stub	pack of 100
S182	1/2" Pin type stub (without groove)	pack of 100

S433	1/2" Pin type stub (with groove) Pin 3.2mm Ø x 6mm long for LEO	pack of 100
S434	1/2" Pin type stub (no groove) Pin 3.2mm Ø x 6mm long for LEO	pack of 100



S081/N
Please state sequence when ordering

Brass

S178	1/2" Pin type stub (with groove)	pack of 10
-------------	----------------------------------	------------

Copper

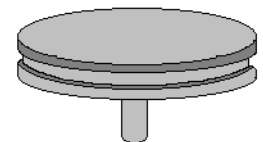
S179	1/2" Pin type stub (with groove)	pack of 10
-------------	----------------------------------	------------

1" Ø (25.4mm) Aluminium Short Pin type stub with 3.2mm Ø pin for **Cambridge/LEO** and **Philips** instruments.

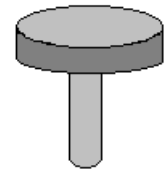
S087	1" Pin type stub	pack of 50
-------------	------------------	------------

32mm Ø Aluminium Short Pin type stub with 3.2mm Ø pin for **Camscan**

S181	32mm Ø pin type stub	pack of 50
-------------	----------------------	------------



S087



S180

Long Pin Type

Aluminium 1/2" Ø (12.7mm) with 3.2mm Ø pin for **Amray**

S180	1/2" Amray pin stub	pack of 50
-------------	---------------------	------------

Re-entry Type

32mm (1 1/4") Ø re-entry (dish) type stub for **Cambridge/LEO**

S091	32mm (1 1/4") Ø Aluminium re-entry type stub	pack of 50
-------------	--	------------

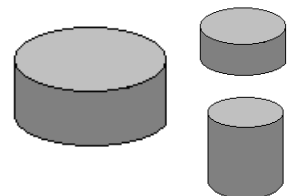


S091

Cylinder Type

Plain cylindrical aluminium stubs for **JEOL** instruments

S183	10mm Ø x 3.5mm high	pck of 50	S084	15mm Ø x 5mm high	pck of 50
S082	10mm Ø x 5mm high	pck of 50	S085	15mm Ø x 10mm high	pck of 50
S083	10mm Ø x 10mm high	pck of 50	S086	15mm Ø x 15mm high	pck of 50
S184	10mm Ø x 12.5mm high	pck of 50	S089	32mm Ø x 5mm high	pck of 50
S185	12.7mm Ø x 5mm high	pck of 50	S090	32mm Ø x 10mm high	pck of 50
S186	12.7mm Ø x 10mm high	pck of 50	S188	32mm Ø x 20mm high	pck of 50
S187	12.7mm Ø x 15mm high	pck of 50	S189	50mm Ø x 10mm high	pck of 50

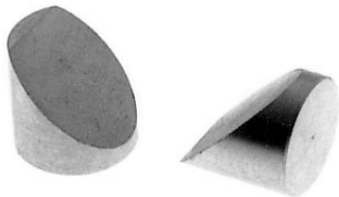


S261

Re-entry Type Stub Adapter

A simple, effective adapter to convert 12.7mm (1/2") pin stubs to allow 32mm (1.5") Ø re-entry dish type stubs to be used on 1/8" stage. The ball catch gives a trouble free, quick solution to a difficult problem.

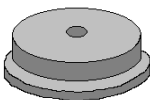
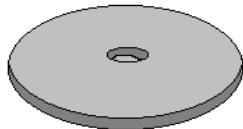
S261	SEM stub adapter - re-entry stub
-------------	----------------------------------



Chamfered Type

Aluminium stubs with a chamfered angle of 45° suitable for **JEOL** or **ISI** instruments where fitting stages are not available.

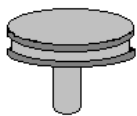
S127	Angled stub 10mm Ø	pack of 10
S190	Angled stub 12.7mm Ø	pack of 10
S126	Angled stub 15mm Ø	pack of 10



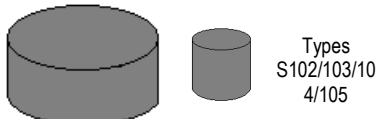
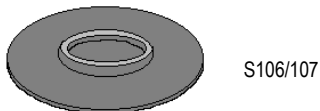
Threaded Type

Aluminium stubs threaded with M4 female thread in base for **Hitachi** instruments.

S128	Threaded stub 15mm Ø x 6mm high	pack of 50
S191	Threaded stub 25mm Ø x 6mm high	pack of 50
S192	Threaded stub 32mm Ø x 2mm high	pack of 50
S193	Threaded stub 32mm Ø x 10mm high	pack of 50



Types S100/101

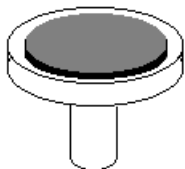
Types
S102/103/104/105

S106/107

Carbon Stubs

Where the background radiation from the specimen stub is troublesome, a specimen stub manufactured from spectroscopic carbon may be used. Stubs for **Cambridge/LEO**, **JEOL** and **ISI** microscopes are available. They can have a *standard* finish or an *ultra smooth* finish for small particles or fibres.

S100	Carbon stub for Cambridge/LEO standard finish	each
S101	Carbon stub for Cambridge/LEO <i>ultra smooth</i> finish	each
S102	Carbon stub for JEOL (10mm Ø x 10mm H) standard	each
S103	Carbon stub for JEOL (10mm Ø x 10mm H) <i>ultra smooth</i>	each
S104	Carbon stub for ISI (15mm Ø x 10mm H) standard	each
S105	Carbon stub for ISI (15mm Ø x 10mm H) <i>ultra smooth</i>	each
S106	Carbon stub for Cambridge microanalysis stage std	each
S107	Carbon stub for Cambridge m/analysis stage <i>u/smooth</i>	each



Carbon Disc on Stub

This is an economical solution to the need for a light element surface for mounting specimens that are to be used for microanalysis. The carbon disc is 3mm thick and is glued to a standard ½" (12.7mm) stub.

Supplied in batches of 8 stubs in a stub storage box.

S111 Box of 8 carbon covered ½" (12.7mm) stubs

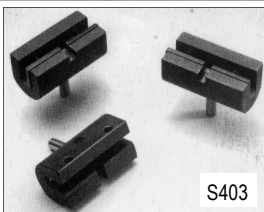


S402

Slotted Specimen Stubs

S402 A 12.5mm slotted aluminium pin stub with two Allen screws allowing the specimen to be securely clamped for examination. Allen key supplied.

S403 A gripping pin stub with slot and single screw to allow specimens to be mounted edge-on for examination (designed at the University of Leicester).



S403

Stub Adapters

These adapters allow JEOL, ISI/ABT and Hitachi users to accommodate the standard pin stubs of the European and American manufacturers. The conversion cylinder contains a clip to hold the pin stub.

S367	Converter for JEOL, 10mm Ø cylinder
S367/1	Converter for JEOL, 12.5mm Ø cylinder
S367/2	Converter for ISI/ABT, 15mm Ø cylinder
S367/3	Converter for Hitachi, 15mm Ø cylinder with M4 internal thread

