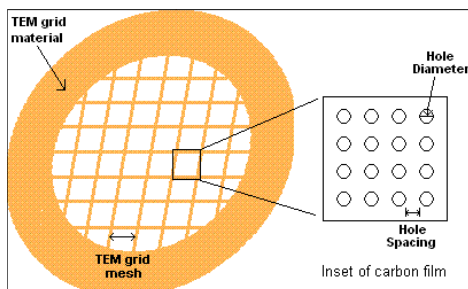


## Ultra Flat Holey Carbon Grids for Cryo TEM

**C-Flat™** is an ultra-flat, holey, carbon-coated TEM support grid for transmission electron microscopy (TEM). Unlike some other holey carbon films, C-flat™ is manufactured **without plastics**, so it is clean and without residue and can be used straight from the box. Made with patent pending technology, C-flat™ provides an ultra-flat surface that results in better particle dispersion and more uniform ice thickness. Patterning is done using deep-UV projection lithography, ensuring the most accurate and consistent hole shapes and sizes down to submicron features. The precise methods by which C-flat™ is manufactured eliminate artefacts such as excess carbon and edges around holes.

C-Flat™ holey carbon grids provide the ideal specimen support to achieve **high resolution data in cryo-TEM** making them an ideal choice for single particle analysis, cryo electron tomography and automated TEM analysis. C-Flat™ is a holey carbon film supported by a standard TEM grid. C-Flat™ products are fully specified by 4 parameters: the hole diameter and pitch of the holey carbon film plus the material type and mesh size of the TEM grid. **Standard support thickness is 20nm but 40nm is available on request at extra cost (about 30%)**. Add postfix /T to existing code number e.g. G285/C50 becomes G285/C50/T.

C-Flat™ is available in several standard array patterns including hole diameters/hole spacings of 0.6/2, 1/1, 1/2, 1/4, 1.2/1.3, 2/1, 2/2, 2/4, 4/2, and a multi-hole pattern. C-Flat™ is supported by your choice of a **200 mesh** or **400 mesh copper TEM grid** and sold in quantities of 50 or 100. **Available on other grid materials (e.g. gold)** to special order.

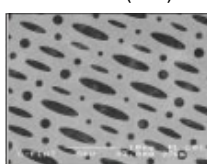


## Ordering Information

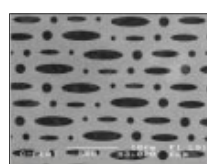
### CF-MH-2C and CF-MH-4C

**Multi-hole and space.** The Multi-hole device has a staggered pattern of six features consisting of three circle patterns of 1µm, 1.4µm and 2µm diameter and three ellipse patterns of 1µm x 4µm, 1.4µm x 5.6µm and 2µm x 8µm.

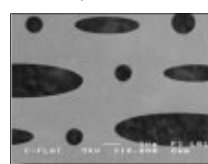
1500x (45°)



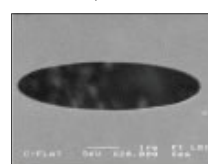
3000x



10,000x



20,000x



**G281/C50** CF-MH-2C Multi-hole on **200** mesh Cu grid (50)

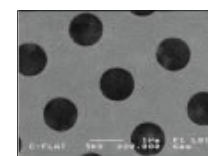
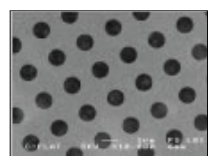
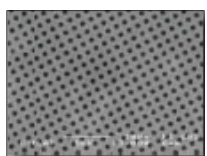
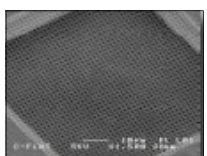
**G281C100** CF-MH-2C Multi-hole on **200** mesh Cu grid (100)

**G282/C50** CF-MH-4C Multi-hole on **400** mesh Cu grid (50)

**G282/C100** CF-MH-4C Multi-hole on **400** mesh Cu grid (100)

**CF-1/1-2C** and **CF-1/1-4C**  
(200 mesh Cu) (400 mesh Cu)

**1.0µm hole, 1.0µm space**



**G283/C50** CF-1/1-2C 1µm hole x 1µm space on **200** mesh Cu grid (50)

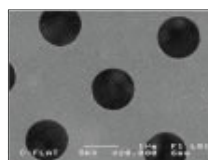
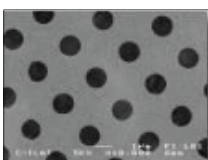
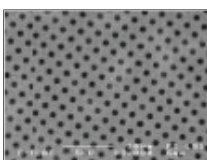
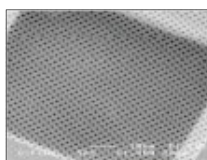
**G283/C100** CF-1/1-2C 1µm hole x 1µm space on **200** mesh Cu grid (100)

**G284/C50** CF-1/1-4C 1µm hole x 1µm space on **400** mesh Cu grid (50)

**G284/C100** CF-1/1-4C 1µm hole x 1µm space on **400** mesh Cu grid (100)

**CF-1.2/1.3-2C** and **CF-1.2/1.3-4C**  
(200 mesh Cu) (400 mesh Cu)

**1.2µm hole, 1.3µm space**



**G285/C50** CF-1.2/1.3-C 1.2µm hole x 1.3µm space on **200** mesh Cu grid (50)

**G285/C100** CF-1.2/1.3-C 1.2µm hole x 1.3µm space on **200** mesh Cu grid (100)

**G286/C50** CF-1.2/1.3-4C 1.2µm hole x 1.3µm space on **400** mesh Cu grid (50)

**G286/C100** CF-1.2/1.3-4C 1.2µm hole x 1.3µm space on **400** mesh Cu grid (100)

**CF-2/0.5-2C** and **CF-2/0.5-4C** (No Images)  
(200 mesh Cu) (400 mesh Cu)

**2.0µm hole, 0.5µm space**

**G287/C50** CF-2/0.5-2C 2µm hole x 0.5µm space on **200** mesh Cu grid (50)

**G287/C100** CF-2/0.5-2C 2µm hole x 0.5µm space on **200** mesh Cu grid (100)

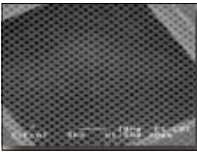
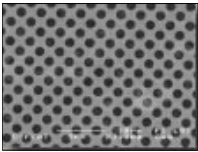
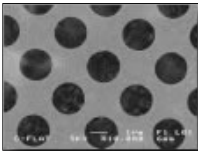
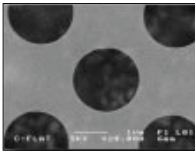
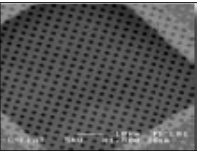
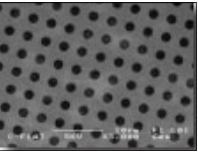
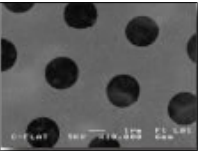
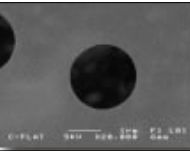
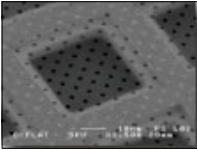
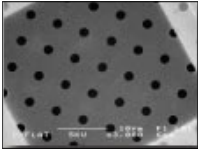
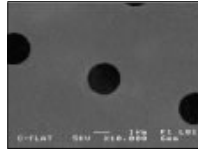
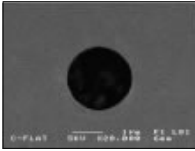
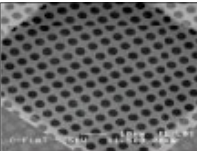
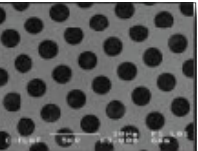
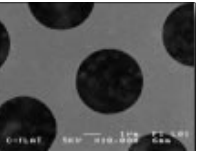
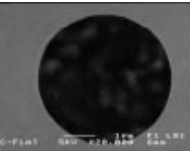
**G288/C50** CF-2/0.5-4C 2µm hole x 0.5µm space on **400** mesh Cu grid (50)

**G288C/100** CF-2/0.5-4C 2µm hole x 0.5µm space on **400** mesh Cu grid (100)

Images show C-Flat™ mounted on a stub using carbon tape and imaged with a Field Emission Scanning Electron Microscope

## C-Flat™ Ultra Flat Holey Carbon Grids

C-Flat™ is a trademark of Protochips, Inc. All rights reserved

		1500x (45°)	3000x	10,000x	20,000x
<b>CF-2/1-2C</b> and <b>CF-2/1-4C</b> (200 mesh Cu) (400 mesh Cu)  <b>2.0µm hole, 1.0µm space</b>					
<b>G289/C50</b> CF-2/1-2C 2µm hole x 1µm space on <b>200</b> mesh Cu grid (50) <b>G289/C100</b> CF-2/1-2C 2µm hole x 1µm space on <b>200</b> mesh Cu grid (100)			<b>G290/C25</b> CF-2/1-4C 2µm hole x 1µm space on <b>400</b> mesh Cu grid (50) <b>G290/C100</b> CF-2/1-4C 2µm hole x 1µm space on <b>400</b> mesh Cu grid (100)		
<b>CF-2/2-2C</b> and <b>CF-2/2-4C</b> (200 mesh Cu) (400 mesh Cu)  <b>2.0µm hole, 2.0µm space</b>					
<b>G291/C50</b> CF-2/2-2C 2µm hole x 2µm space on <b>200</b> mesh Cu grid (50) <b>G291/C100</b> CF-2/2-2C 2µm hole x 2µm space on <b>200</b> mesh Cu grid (100)			<b>G292/C50</b> CF-2/2-4C 2µm hole x 2µm space on <b>400</b> mesh Cu grid (50) <b>G292/C100</b> CF-2/2-4C 2µm hole x 2µm space on <b>400</b> mesh Cu grid (100)		
<b>CF-2/4-2C</b> and <b>CF-2/4-4C</b> (200 mesh Cu) (400 mesh Cu)  <b>2.0µm hole, 4.0µm space</b>					
<b>G293/C50</b> CF-2/4-2C 2µm hole x 4µm space on <b>200</b> mesh Cu grid (50) <b>G293/C100</b> CF-2/4-2C 2µm hole x 4µm space on <b>200</b> mesh Cu grid (100)			<b>G294/C50</b> CF-2/4-4C 2µm hole x 4µm space on <b>400</b> mesh Cu grid (50) <b>G294/C100</b> CF-2/4-4C 2µm hole x 4µm space on <b>400</b> mesh Cu grid (100)		
<b>CF-4/1-2C</b> and <b>CF-4/1-4C</b> (200 mesh Cu) (400 mesh Cu)	No images				
<b>4.0µm hole, 1.0µm space</b>					
<b>G295/C50</b> CF-4/1-2C 4µm hole x 1µm space on <b>200</b> mesh Cu grid (50) <b>G295/C100</b> CF-4/1-2C 4µm hole x 1µm space on <b>200</b> mesh Cu grid (100)			<b>G296/C50</b> CF-4/1-4C 4µm hole x 1µm space on <b>400</b> mesh Cu grid (50) <b>G296/C100</b> CF-4/1-4C 4µm hole x 1µm space on <b>400</b> mesh Cu grid (100)		
<b>CF-4/2-2C</b> and <b>CF-4/2-4C</b> (200 mesh Cu) (400 mesh Cu)  <b>4.0µm hole, 2.0µm space</b>					
<b>G297/C50</b> CF-4/2-2C 4µm hole x 2µm space on <b>200</b> mesh Cu grid (50) <b>G297/C100</b> CF-4/2-2C 4µm hole x 2µm space on <b>200</b> mesh Cu grid (100)			<b>G298/C50</b> CF-4/2-4C 4µm hole x 2µm space on <b>400</b> mesh Cu grid (50) <b>G298/C100</b> CF-4/2-4C 4µm hole x 2µm space on <b>400</b> mesh Cu grid (100)		

## Quantifoil® Holey Carbon Films

QUANTIFOIL® holey carbon films are produced by a semiconductor lithographic process. They are available with different hole sizes, shapes and arrangements. Researchers who would like to try out different types of QUANTIFOIL® holey films in order to find out which one meets their requirements best, can order our MixBox. QUANTIFOIL® R 1/4 may be preferred over R 1.2/1.3 (see below), when an increased tolerance with respect to the position of beam and a larger beam diameter are desired, such as in the case with automated image acquisition. QUANTIFOIL® provide a high percentage of open area in addition to minimising total specimen thickness. The thickness of the foil is about 20nm, although only 10 nm of carbon is evaporated onto the plastic. The surface properties of QUANTIFOIL® holey carbon support film, especially the wetting properties, may have to be adapted according to one's particular requirements. Untreated ageing QUANTIFOIL® tends to be hydrophobic. The foil can be made hydrophilic by glow discharging in residual air or by metal coating. QUANTIFOIL® grids are packaged with their **coated** sides toward the **centre** of the grid box.. Holey films with new geometric parameters can be designed. In addition, they can be delivered with coatings other than carbon that can be deposited by vacuum evaporation.

QUANTIFOIL® with **circular** holes is mainly used in cryo-EM. The roundness of the holes is advantageous for the formation of an ice layer of constant thickness. The hole size that is chosen depends on the magnification used and on whether or not one wishes to include a support film in the image. Assessment of the image quality is easier when foil is included in the picture as the power spectrum of a foil is stronger than that of unsupported ice. **For those customers unsure of which Quantifoil® to use please try our MixBox .**

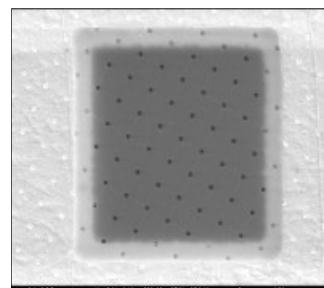
### Quantifoil® with Round Holes on Copper, Nickel & Gold Grids 200, 300 & 400 Mesh and in 50 or 100 pack sizes

#### Quantifoil R 0.6/1

<b>G299/2C/50</b>	Quantifoil 0.6µm dia x 1.0µm <b>200</b> Mesh <i>Cu</i> 50 pack	<b>G299/3C/50</b>	Quantifoil 0.6µm dia x 1.0µm <b>300</b> Mesh <i>Cu</i> 50 pack
<b>G299/2C/100</b>	Quantifoil 0.6µm dia x 1.0µm <b>200</b> Mesh <i>Cu</i> 100 pack	<b>G299/3C/100</b>	Quantifoil 0.6µm dia x 1.0µm <b>300</b> Mesh <i>Cu</i> 100 pck
<b>G299/2N/50</b>	Quantifoil 0.6µm dia x 1.0µm <b>200</b> Mesh <i>Ni</i> 50 pack	<b>G299/3N/50</b>	Quantifoil 0.6µm dia x 1.0µm <b>300</b> Mesh <i>Ni</i> 50 pack
<b>G299/2N/100</b>	Quantifoil 0.6µm dia x 1.0µm <b>200</b> Mesh <i>Ni</i> 100 pack	<b>G299/3N/100</b>	Quantifoil 0.6µm dia x 1.0µm <b>300</b> Mesh <i>Ni</i> 100 pck
<b>G299/2G/50</b>	Quantifoil 0.6µm dia x 1.0µm <b>200</b> Mesh <i>Au</i> 50 pack	<b>G299/3G/50</b>	Quantifoil 0.6µm dia x 1.0µm <b>300</b> Mesh <i>Au</i> 50 pack
<b>G299/2G/100</b>	Quantifoil 0.6µm dia x 1.0µm <b>200</b> Mesh <i>Au</i> 100 pack	<b>G299/3G/100</b>	Quantifoil 0.6µm dia x 1.0µm <b>300</b> Mesh <i>Au</i> 100 pck

<b>G299/4C/50</b>	Quantifoil 0.6µm dia x 1.0µm <b>400</b> Mesh <i>Cu</i> 50 pack
<b>G299/4C/100</b>	Quantifoil 0.6µm dia x 1.0µm <b>400</b> Mesh <i>Cu</i> 100 pack
<b>G299/4N/50</b>	Quantifoil 0.6µm dia x 1.0µm <b>400</b> Mesh <i>Ni</i> 50 pack
<b>G299/4N/100</b>	Quantifoil 0.6µm dia x 1.0µm <b>400</b> Mesh <i>Ni</i> 100 pack
<b>G299/4G/50</b>	Quantifoil 0.6µm dia x 1.0µm <b>400</b> Mesh <i>Au</i> 50 pack
<b>G299/4G/100</b>	Quantifoil 0.6µm dia x 1.0µm <b>400</b> Mesh <i>Au</i> 100 pack

Quantifoil® Holey Carbon  
Films with **0.6µm holes**  
separated by  
**1µm spaces**

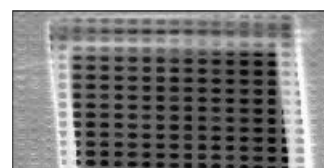


#### Quantifoil R 1.2/1.3

<b>G300/2C/50</b>	Quantifoil 1.2µm dia x 1.3µm <b>200</b> Mesh <i>Cu</i> 50 pack	<b>G300/3C/50</b>	Quantifoil 1.2µm dia x 1.3µm <b>300</b> Mesh <i>Cu</i> 50 pack
<b>G300/2C/100</b>	Quantifoil 1.2µm dia x 1.3µm <b>200</b> Mesh <i>Cu</i> 100 pack	<b>G300/3C/100</b>	Quantifoil 1.2µm dia x 1.3µm <b>300</b> Mesh <i>Cu</i> 100 pck
<b>G300/2N/50</b>	Quantifoil 1.2µm dia x 1.3µm <b>200</b> Mesh <i>Ni</i> 50 pack	<b>G300/3N/50</b>	Quantifoil 1.2µm dia x 1.3µm <b>300</b> Mesh <i>Ni</i> 50 pack
<b>G300/2N/100</b>	Quantifoil 1.2µm dia x 1.3µm <b>200</b> Mesh <i>Ni</i> 100 pack	<b>G300/3N/100</b>	Quantifoil 1.2µm dia x 1.3µm <b>300</b> Mesh <i>Ni</i> 100 pck
<b>G300/2G/50</b>	Quantifoil 1.2µm dia x 1.3µm <b>200</b> Mesh <i>Au</i> 50 pack	<b>G300/3G/50</b>	Quantifoil 1.2µm dia x 1.3µm <b>300</b> Mesh <i>Au</i> 50 pack
<b>G300/2G/100</b>	Quantifoil 1.2µm dia x 1.3µm <b>200</b> Mesh <i>Au</i> 100 pack	<b>G300/3G/100</b>	Quantifoil 1.2µm dia x 1.3µm <b>300</b> Mesh <i>Au</i> 100 pck

<b>G300/4C/50</b>	Quantifoil 1.2µm dia x 1.3µm <b>400</b> Mesh <i>Cu</i> 50 pack
<b>G300/4C/100</b>	Quantifoil 1.2µm dia x 1.3µm <b>400</b> Mesh <i>Cu</i> 100 pck
<b>G300/4N/50</b>	Quantifoil 1.2µm dia x 1.3µm <b>400</b> Mesh <i>Ni</i> 50 pack
<b>G300/4N/100</b>	Quantifoil 1.2µm dia x 1.3µm <b>400</b> Mesh <i>Ni</i> 100 pck
<b>G300/4G/50</b>	Quantifoil 1.2µm dia x 1.3µm <b>400</b> Mesh <i>Au</i> 50 pack
<b>G300/4G/100</b>	Quantifoil 1.2µm dia x 1.3µm <b>400</b> Mesh <i>Au</i> 100 pck

Quantifoil® Holey Carbon  
Films with **1.2µm holes**  
separated by  
**1.3µm spaces**





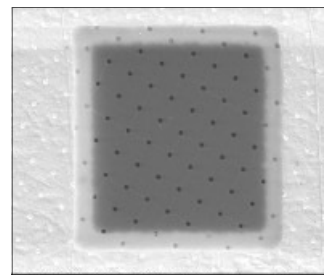
## Quantifoil R 1/4

**G301/2C/50** Quantifoil 1µm dia x 4µm **200** Mesh *Cu* 50 pack  
**G301/2C/100** Quantifoil 1µm dia x 4µm **200** Mesh *Cu* 100 pack  
**G301/2N/50** Quantifoil 1µm dia x 4µm **200** Mesh *Ni* 50 pack  
**G301/2N/100** Quantifoil 1µm dia x 4µm **200** Mesh *Ni* 100 pack  
**G301/2G/50** Quantifoil 1µm dia x 4µm **200** Mesh *Au* 50 pack  
**G301/2G/100** Quantifoil 1µm dia x 4µm **200** Mesh *Au* 100 pack

**G301/3C/50** Quantifoil 1µm dia x 4µm **300** Mesh *Cu* 50 pack  
**G301/3C/100** Quantifoil 1µm dia x 4µm **300** Mesh *Cu* 100 pack  
**G301/3N/50** Quantifoil 1µm dia x 4µm **300** Mesh *Ni* 50 pack  
**G301/3N/100** Quantifoil 1µm dia x 4µm **300** Mesh *Ni* 100 pack  
**G301/3G/50** Quantifoil 1µm dia x 4µm **300** Mesh *Au* 50 pack  
**G301/3G/100** Quantifoil 1µm dia x 4µm **300** Mesh *Au* 100 pack

**G301/4C/50** Quantifoil 1µm dia x 4µm **400** Mesh *Cu* 50 pack  
**G301/4C/100** Quantifoil 1µm dia x 4µm **400** Mesh *Cu* 100 pack  
**G301/4N/50** Quantifoil 1µm dia x 4µm **400** Mesh *Ni* 50 pack  
**G301/4N/100** Quantifoil 1µm dia x 4µm **400** Mesh *Ni* 100 pack  
**G301/4G/50** Quantifoil 1µm dia x 4µm **400** Mesh *Au* 50 pack  
**G301/4G/100** Quantifoil 1µm dia x 4µm **400** Mesh *Au* 100 pack

Quantifoil® Holey Carbon  
 Films with **1µm holes**  
 separated by  
**4µm spaces**



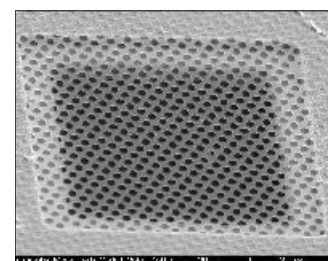
## Quantifoil R 2/1

**G310/2C/50** Quantifoil 2µm dia x 1µm **200** mesh *Cu* 50 pack  
**G310/2C/100** Quantifoil 2µm dia x 1µm **200** mesh *Cu* 100 pack  
**G310/2N/50** Quantifoil 2µm dia x 1µm **200** mesh *Ni* 50 pack  
**G310/2N/100** Quantifoil 2µm dia x 1µm **200** mesh *Ni* 100 pack  
**G310/2G/50** Quantifoil 2µm dia x 1µm **200** mesh *Au* 50 pack  
**G310/2G/100** Quantifoil 2µm dia x 1µm **200** mesh *Au* 100 pack

**G310/3C/50** Quantifoil 2µm dia x 1µm **300** mesh *Cu* 50 pack  
**G310/3C/100** Quantifoil 2µm dia x 1µm **300** mesh *Cu* 100 pack  
**G310/3N/50** Quantifoil 2µm dia x 1µm **300** mesh *Ni* 50 pack  
**G310/3N/100** Quantifoil 2µm dia x 1µm **300** mesh *Ni* 100 pack  
**G310/3G/50** Quantifoil 2µm dia x 1µm **300** mesh *Au* 50 pack  
**G310/3G/100** Quantifoil 2µm dia x 1µm **300** mesh *Au* 100 pack

**G310/4C/50** Quantifoil 2µm dia x 1µm **400** mesh *Cu* 50 pack  
**G310/4C/100** Quantifoil 2µm dia x 1µm **400** mesh *Cu* 100 pack  
**G310/4N/50** Quantifoil 2µm dia x 1µm **400** mesh *Ni* 50 pack  
**G310/4N/100** Quantifoil 2µm dia x 1µm **400** mesh *Ni* 100 pack  
**G310/4G/50** Quantifoil 2µm dia x 1µm **400** mesh *Au* 50 pack  
**G310/4G/100** Quantifoil 2µm dia x 1µm **400** mesh *Au* 100 pack

Quantifoil® Holey Carbon  
 Films with **2µm holes**  
 separated by  
**1µm spaces**



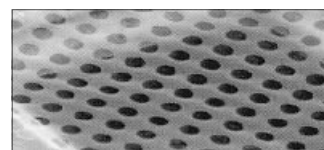
## Quantifoil R 2/2

**G302/2C/50** Quantifoil 2µm dia x 2µm **200** Mesh *Cu* 50 pack  
**G302/2C/100** Quantifoil 2µm dia x 2µm **200** Mesh *Cu* 100 pack  
**G302/2N/50** Quantifoil 2µm dia x 2µm **200** Mesh *Ni* 50 pack  
**G302/2N/100** Quantifoil 2µm dia x 2µm **200** Mesh *Ni* 100 pack  
**G302/2G/50** Quantifoil 2µm dia x 2µm **200** Mesh *Au* 50 pack  
**G302/2G/100** Quantifoil 2µm dia x 2µm **200** Mesh *Au* 100 pack

**G302/3C/50** Quantifoil 2µm dia x 2µm **300** Mesh *Cu* 50 pack  
**G302/3C/100** Quantifoil 2µm dia x 2µm **300** Mesh *Cu* 100 pack  
**G302/3N/50** Quantifoil 2µm dia x 2µm **300** Mesh *Ni* 50 pack  
**G302/3N/100** Quantifoil 2µm dia x 2µm **300** Mesh *Ni* 100 pack  
**G302/3G/50** Quantifoil 2µm dia x 2µm **300** Mesh *Au* 50 pack  
**G302/3G/100** Quantifoil 2µm dia x 2µm **300** Mesh *Au* 100 pack

**G302/4C/50** Quantifoil 2µm dia x 2µm **400** Mesh *Cu* 50 pack  
**G302/4C/100** Quantifoil 2µm dia x 2µm **400** Mesh *Cu* 100 pack  
**G302/4N/50** Quantifoil 2µm dia x 2µm **400** Mesh *Ni* 50 pack  
**G302/4N/100** Quantifoil 2µm dia x 2µm **400** Mesh *Ni* 100 pack  
**G302/4G/50** Quantifoil 2µm dia x 2µm **400** Mesh *Au* 50 pack  
**G302/4G/100** Quantifoil 2µm dia x 2µm **400** Mesh *Au* 100 pck

Quantifoil® Holey Carbon  
 Films with **2µm holes**  
 separated by  
**2µm spaces**



Please ask for our data sheet

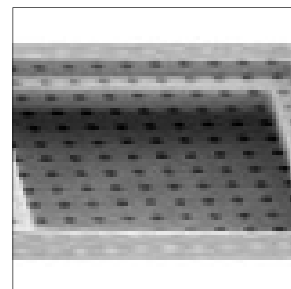
## Quantifoil R 2/4

**G303/2C/50** Quantifoil 2µm dia x 4µm **200** Mesh *Cu* 50 pack  
**G303/2C/100** Quantifoil 2µm dia x 4µm **200** Mesh *Cu* 100 pack  
**G303/2N/50** Quantifoil 2µm dia x 4µm **200** Mesh *Ni* 50 pack  
**G303/2N/100** Quantifoil 2µm dia x 4µm **200** Mesh *Ni* 100 pack  
**G303/2G/50** Quantifoil 2µm dia x 4µm **200** Mesh *Au* 50 pack  
**G303/2G/100** Quantifoil 2µm dia x 4µm **200** Mesh *Au* 100 pack

**G303/3C/50** Quantifoil 2µm dia x 4µm **300** Mesh *Cu* 50 pack  
**G303/3C/100** Quantifoil 2µm dia x 4µm **300** Mesh *Cu* 100 pack  
**G303/3N/50** Quantifoil 2µm dia x 4µm **300** Mesh *Ni* 50 pack  
**G303/3N/100** Quantifoil 2µm dia x 4µm **300** Mesh *Ni* 100 pack  
**G303/3G/50** Quantifoil 2µm dia x 4µm **300** Mesh *Au* 50 pack  
**G303/3G/100** Quantifoil 2µm dia x 4µm **300** Mesh *Au* 100 pack

**G303/4C/50** Quantifoil 2µm dia x 4µm **400** Mesh *Cu* 50 pack  
**G303/4C/100** Quantifoil 2µm dia x 4µm **400** Mesh *Cu* 100 pack  
**G303/4N/50** Quantifoil 2µm dia x 4µm **400** Mesh *Ni* 50 pack  
**G303/4N/100** Quantifoil 2µm dia x 4µm **400** Mesh *Ni* 100 pack  
**G303/4G/50** Quantifoil 2µm dia x 4µm **400** Mesh *Au* 50 pack  
**G303/4G/100** Quantifoil 2µm dia x 4µm **400** Mesh *Au* 100 pack

Quantifoil® Holey Carbon  
 Films with **2µm holes**  
 separated by  
**4µm spaces**



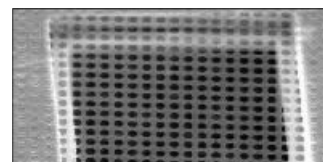
## Quantifoil R 3.5/1

**G304/2C/50** Quantifoil 3.5µm dia x 1µm **200** Mesh *Cu* 50 pack  
**G304/2C/100** Quantifoil 3.5µm dia x 1µm **200** Mesh *Cu* 100 pack  
**G304/2N/50** Quantifoil 3.5µm dia x 1µm **200** Mesh *Ni* 50 pack  
**G304/2N/100** Quantifoil 3.5µm dia x 1µm **200** Mesh *Ni* 100 pack  
**G304/2G/50** Quantifoil 3.5µm dia x 1µm **200** Mesh *Au* 50 pack  
**G304/2G/100** Quantifoil 3.5µm dia x 1µm **200** Mesh *Au* 100 pack

**G304/3C/50** Quantifoil 3.5µm dia x 1µm **300** Mesh *Cu* 50 pack  
**G304/3C/100** Quantifoil 3.5µm dia x 1µm **300** Mesh *Cu* 100 pck  
**G304/3N/50** Quantifoil 3.5µm dia x 1µm **300** Mesh *Ni* 50 pack  
**G304/3N/100** Quantifoil 3.5µm dia x 1µm **300** Mesh *Ni* 100 pck  
**G304/3G/50** Quantifoil 3.5µm dia x 1µm **300** Mesh *Au* 50 pack  
**G304/3G/100** Quantifoil 3.5µm dia x 1µm **300** Mesh *Au* 100 pck

**G304/4C/50** Quantifoil 3.5µm dia x 1µm **400** Mesh *Cu* 50 pack  
**G304/4C/100** Quantifoil 3.5µm dia x 1µm **400** Mesh *Cu* 100 pck  
**G304/4N/50** Quantifoil 3.5µm dia x 1µm **400** Mesh *Ni* 50 pack  
**G304/4N/100** Quantifoil 3.5µm dia x 1µm **400** Mesh *Ni* 100 pck  
**G304/4G/50** Quantifoil 3.5µm dia x 1µm **400** Mesh *Au* 50 pack  
**G304/4G/100** Quantifoil 3.5µm dia x 1µm **400** Mesh *Au* 100 pck

Quantifoil® Holey Carbon  
 Films with **3.5µm holes**  
 separated by  
**1µm spaces**



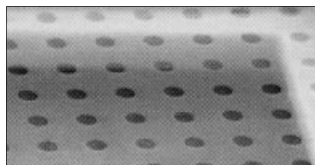
## Quantifoil R 5/20

**G305/2C/50** Quantifoil 5µm dia x 20µm **200** Mesh *Cu* 50 pack  
**G305/2C/100** Quantifoil 5µm dia x 20µm **200** Mesh *Cu* 100 pack  
**G305/2N/50** Quantifoil 5µm dia x 20µm **200** Mesh *Ni* 50 pack  
**G305/2N/100** Quantifoil 5µm dia x 20µm **200** Mesh *Ni* 100 pack  
**G305/2G/50** Quantifoil 5µm dia x 20µm **200** Mesh *Au* 50 pack  
**G305/2G/100** Quantifoil 5µm dia x 20µm **200** Mesh *Au* 100 pack

**G305/3C/50** Quantifoil 5µm dia x 20µm **300** Mesh *Cu* 50 pack  
**G305/3C/100** Quantifoil 5µm dia x 20µm **300** Mesh *Cu* 100 pck  
**G305/3N/50** Quantifoil 5µm dia x 20µm **300** Mesh *Ni* 50 pack  
**G305/3N/100** Quantifoil 5µm dia x 20µm **300** Mesh *Ni* 100 pck  
**G305/3G/50** Quantifoil 5µm dia x 20µm **300** Mesh *Au* 50 pack  
**G305/3G/100** Quantifoil 5µm dia x 20µm **300** Mesh *Au* 100 pck

**G305/4C/50** Quantifoil 5µm dia x 20µm **400** Mesh *Cu* 50 pack  
**G305/4C/100** Quantifoil 5µm dia x 20µm **400** Mesh *Cu* 100 pck  
**G305/4N/50** Quantifoil 5µm dia x 20µm **400** Mesh *Ni* 50 pack  
**G305/4N/100** Quantifoil 5µm dia x 20µm **400** Mesh *Ni* 100 pck  
**G305/4G/50** Quantifoil 5µm dia x 20µm **400** Mesh *Au* 50 pack  
**G305/4G/100** Quantifoil 5µm dia x 20µm **400** Mesh *Au* 100 pck

Quantifoil® Holey Carbon  
 Films with **5µm holes**  
 separated by  
**20µm spaces**



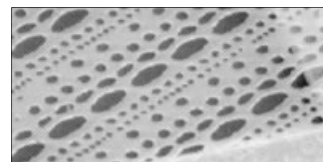
## Quantifoil Multi A

**G306/2C/50** Quantifoil Multi A **200** Mesh *Cu* 50 pack  
**G306/2C/100** Quantifoil Multi A **200** Mesh *Cu* 100 pack  
**G306/2N/50** Quantifoil Multi A **200** Mesh *Ni* 50 pack  
**G306/2N/100** Quantifoil Multi A **200** Mesh *Ni* 100 pack

**G306/3C/50** Quantifoil Multi A **300** Mesh *Cu* 50 pack  
**G306/3C/100** Quantifoil Multi A **300** Mesh *Cu* 100 pck  
**G306/3N/50** Quantifoil Multi A **300** Mesh *Ni* 50 pack  
**G306/3N/100** Quantifoil Multi A **300** Mesh *Ni* 100 pack

**G306/4C/50** Quantifoil Multi A **400** Mesh *Cu* 50 pack  
**G306/4C/100** Quantifoil Multi A **400** Mesh *Cu* 100 pck  
**G306/4N/50** Quantifoil Multi A **400** Mesh *Ni* 50 pack  
**G306/4N/100** Quantifoil Multi A **400** Mesh *Ni* 100 pack

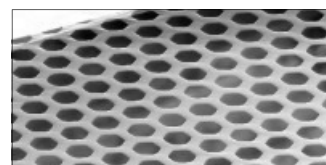
Quantifoil® Holey Carbon  
 Films with  
**different hole sizes**  
 and **patterns**



## Quantifoil Hex15

**G307/Hex15/C/50** Quantifoil hexagonal mesh on 0.5 x 2mm slot grids *Cu* 50 pack  
**G307/Hex15/C/100** Quantifoil hexagonal mesh on 0.5 x 2mm slot grids *Cu* 100 pack

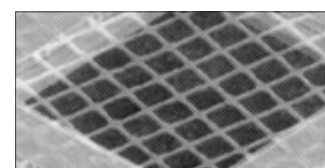
Quantifoil® **Hexagonal** on slot grid 0.5 x 2mm  
 For **section support** giving greatest open area  
**Hole size 26µm**  
 Bar width 15µm repeat distance 41µm



## Quantifoil® with Square Holes on copper, nickel and gold grids

## Quantifoil S 7/2

**G308/C/S72/50** Quantifoil S 7/2 square 7 x 7µm holes *Cu* 50 pack  
**G308/C/S72/100** Quantifoil S 7/2 square 7 x 7µm holes *Cu* 100 pack  
**G308/N/S72/50** Quantifoil S 7/2 square 7 x 7µm holes *Ni* 50 pack  
**G308/N/S72/100** Quantifoil S 7/2 square 7 x 7µm holes *Ni* 100 pack  
**G308/G/S72/50** Quantifoil S 7/2 square 7 x 7µm holes *Au* 50 pack  
**G308/G/S72/100** Quantifoil S 7/2 square 7 x 7µm holes *Au* 100 pck



Quantifoil® with **square holes** and **narrow bars**  
 can be used in TEM to support a thin carbon film which  
 by itself is too fragile to span a grid square. Alterna-  
 tively, this holey film can directly support an object that  
 is larger than the holes.

## Quantifoil® MixBox

The MixBox contains 5 pieces each of the following on 300 mesh copper grids

**R 1.2/1.3**  
**R 2/1**  
**R 3.5/1**  
**S 7/2**  
**Multi A**

**G309** Quantifoil® MixBox